

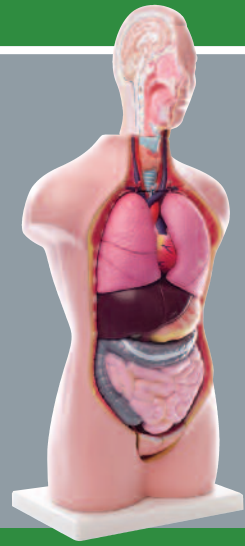


Ministry of Education Science Centres, Libya

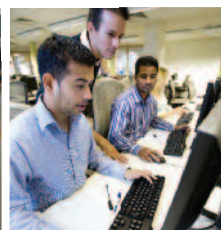
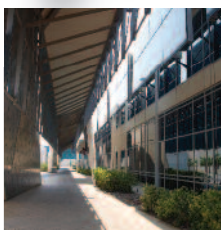
In 2006 the Ministry of Education in Libya began a project to equip all secondary schools in Libya with Biology, Chemistry and Physics practical science equipment.

The first phase of the project involved the supply of basic laboratory equipment to 1500 schools.

EduTeq was successful in securing contracts with five local Libyan companies. This led to the successful delivery of equipment to 547 schools in two phases over the period 2006 - 2009.



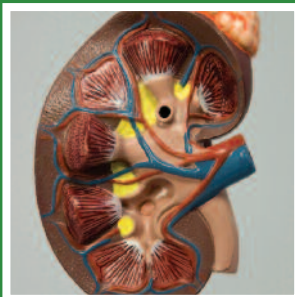
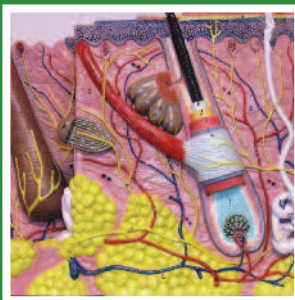
Country:	Libya
Type:	Education, Secondary
Client:	Ministry of Education, Libya
Funding:	Government Financing
Value:	EUR 10,674,400
Faculties:	Biology, Chemistry, Physics



EduTeq's Services

During the period 2006 - 2009, EduTeq and their strategic partners were responsible for:

- Global Procurement
- Client Relationship Management
- Translation of learning materials, software and manuals into Arabic
- Supplier Inspections
- Client Inspections of Equipment
- Consolidation and packing by school
- Logistics Management
- Third party Inspections



for the following laboratories:

Biology: including microscopes, biological models, biological slides and educational transparencies

Chemistry: including Kipp's apparatus, Hoffmans Voltammeters, laboratory grade glassware and laboratory chemicals

Physics: including optical benches, barometers, balances and data logging equipment

Audio: including PC, printer, multimedia projector, overhead projector and projection screen.

In addition, student benches and stools, teacher benches and chairs, mobile fume cupboards, chemical cupboards and storage cupboards were supplied.

EduTeq shipped ninety 40' containers of equipment for five different companies over a period of three months in the summer of 2008. This demonstrates EduTeq's unique capability to integrate products from disparate international sources into one coherent offering while satisfying demanding clients within a stringent timeframe.